

Canon

Getting Started for Mac Users



office all-in-one
PIXMA MX860 series

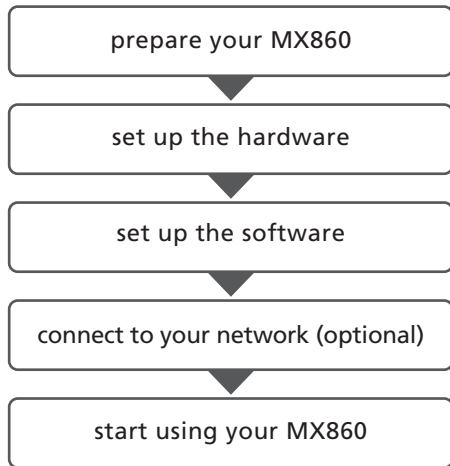


QT10851V01

Contents

Getting Started Overview	4
Prepare Your MX860	4
Before Starting	4
Unpack and Set Up	5
Set Up the Hardware	8
Install the Print Head	8
Install the Ink Tanks	10
Load Paper	11
Align the Print Head	12
Set Up to Receive Faxes	14
Set Up Your Fax Sender Information	15
Set Up the Software	15
Install the Software	15
Connect to Your Network (optional)	18
Choose Your Network Type	18
Wireless Networks with a Single Access Point	19
Wireless Networks with Multiple Airport Access Points	23
Wired Networks	28
Connecting Additional Computers	33
Start Using Your MX860!	37
Solution Menu	37
On-Screen Manual	37

Getting Started Overview




Prepare Your MX860


Congratulations on your new MX860. This Getting Started guide will help you through a fast, simple setup.

There will be decision points in fax and network setup where you will make choices. Following the steps will make these choices easy.

Before Starting

 **NOTE** If you do not have a wireless network, skip this step.

If you are installing your MX860 to a wireless network, locate your network name (also called SSID or Service Set Identifier) and network password (if applicable).

You can locate the wireless network name by clicking the  icon in the menu bar.

Network Name (also called SSID): _____

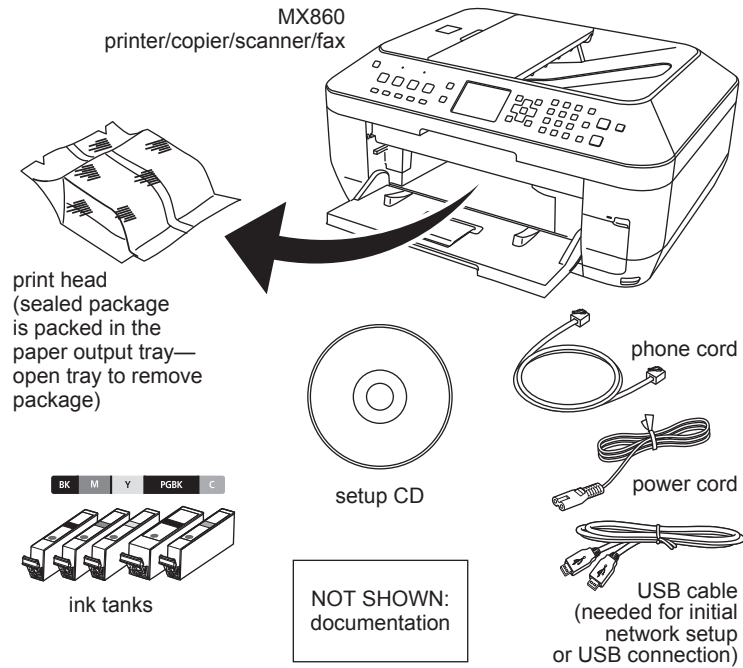
Network Password (if applicable): _____

You can also retrieve your network name and password by using the Canon PIXMA Wireless Setup Assistant, or by following the procedures available for download from the Canon support webpage (www.usa.canon.com/downloadlibrary).

If you are unable to retrieve the network password or other settings, refer to the manual of your access point or router, or contact the manufacturer.

Unpack and Set Up

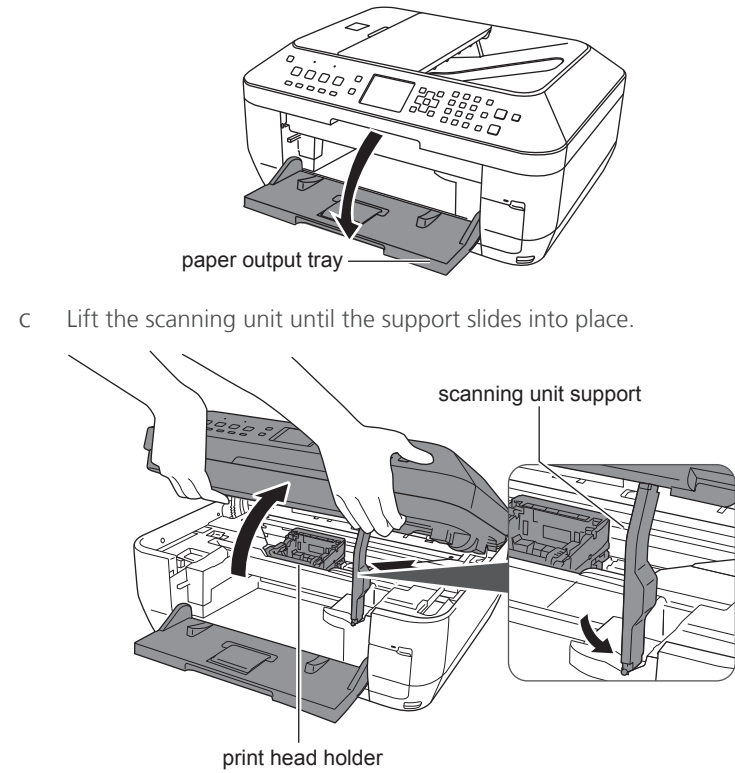
1 Check your box contents



If any parts are missing, contact Canon (see back cover for contact data).

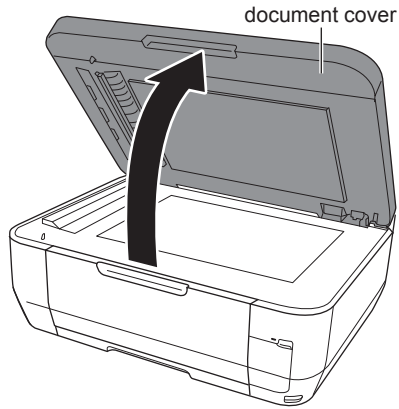
2 Remove all packing materials

- a Remove all tape from the outside of the MX860.
- b Open the paper output tray.



- d Remove all tape and packing material from inside the MX860.
- e Lift the scanning unit slightly to release the support and close.

f Lift the document cover and remove any packing material.

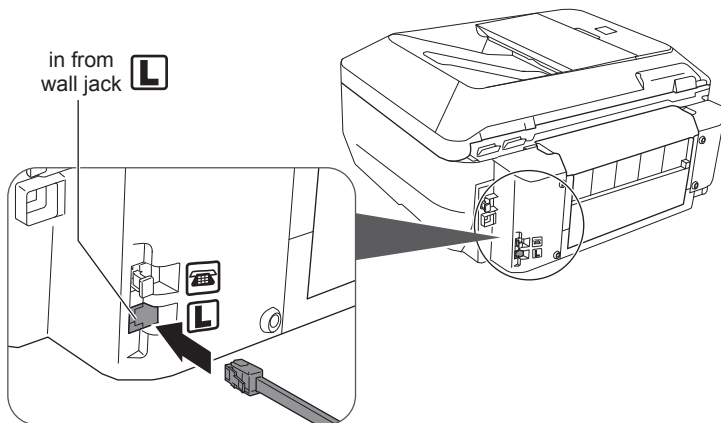


g Close the document cover.

3 Connect the phone line for fax setup

NOTE If you do not plan to fax from your MX860, proceed to step 5.

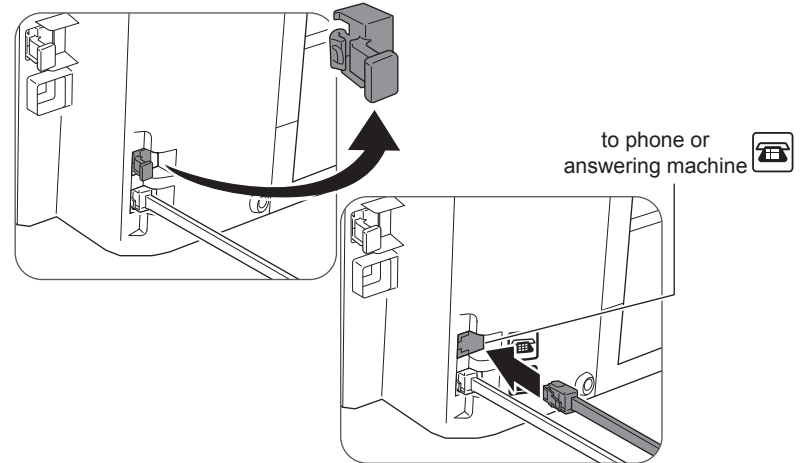
Connect the phone cord from the MX860 to the wall.



NOTE Make sure you connect the phone cable into the port shown above.

4 Connect a phone or answering machine for fax setup

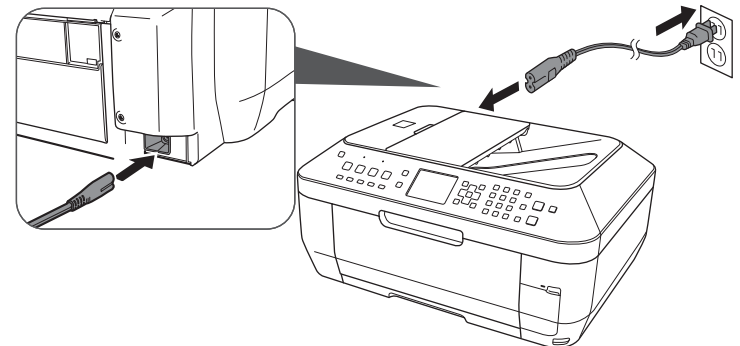
To use a phone or answering machine on the same line, remove the cap on the top phone jack and connect the phone or answering machine to the MX860.



NOTE Make sure you connect the phone cable into the port shown above.

5 Connect the power cord

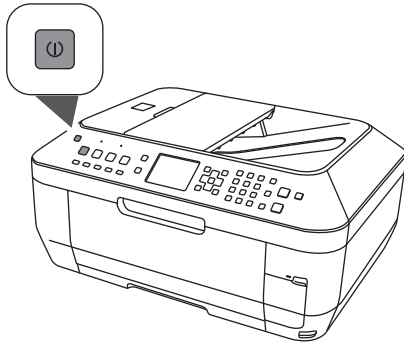
Connect the power cord first to the MX860, then to a wall socket.



NOTE DO NOT connect the USB cable yet.

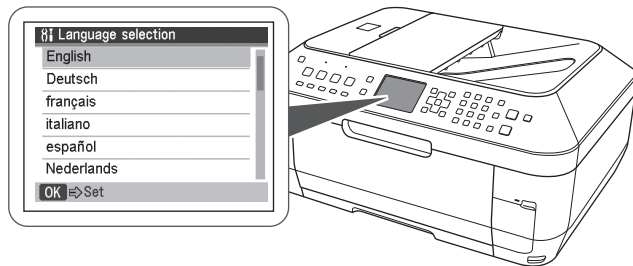
6 Power up

Press the ON button to turn on the MX860.

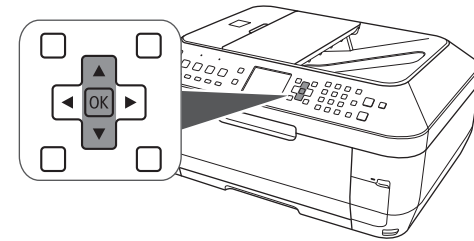


NOTE Your MX860 will make sounds as it powers up. This is normal.

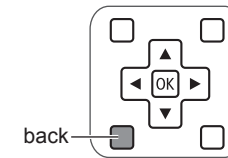
7 Select language



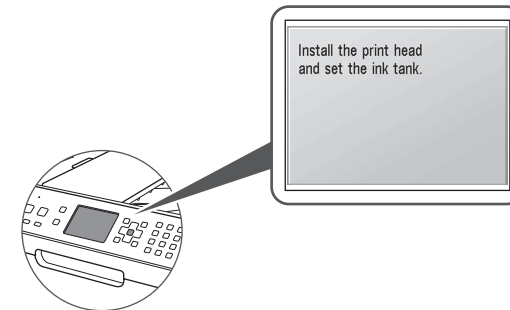
Use the ▲ and ▼ button on the operation panel to select a language for the display, then press **OK**.



NOTE If you select a wrong language, press **Back** to return to Language selection options.



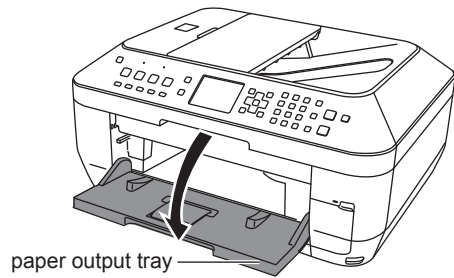
NOTE Once your language is selected, the display will prompt to install the print head and ink tanks.



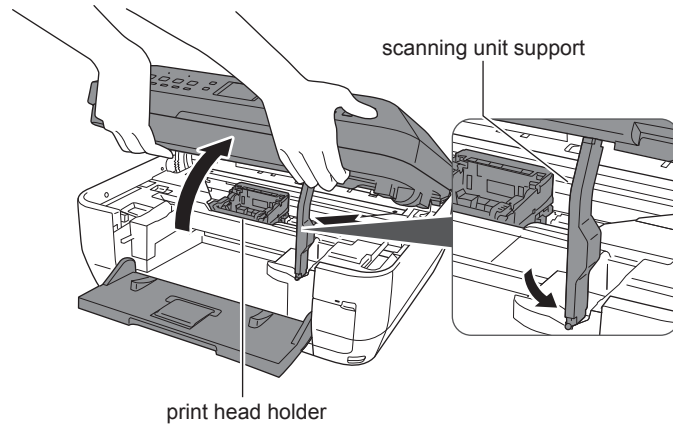
Set Up the Hardware

Install the Print Head

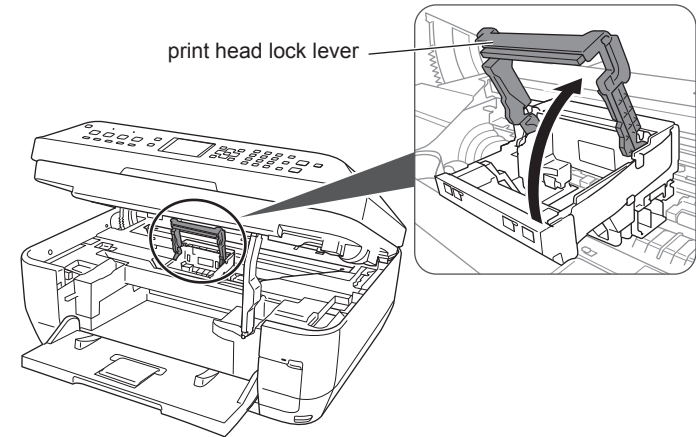
- 1 With the power on, open the paper output tray



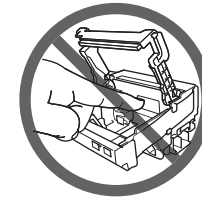
- 2 Lift the scanning unit until the support slides into place



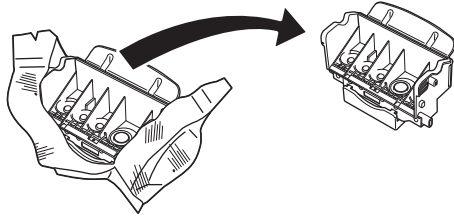
- 3 Raise the print head lock lever



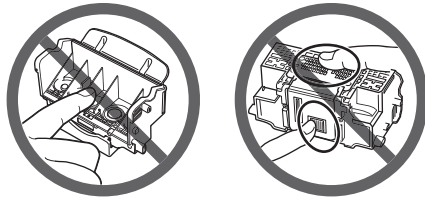
- NOTE Avoid touching the contact points in the print head holder.



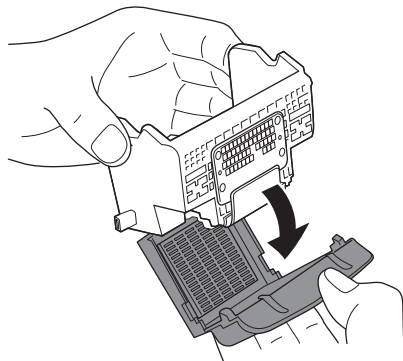
4 Unpackage the print head



NOTE When handling the print head, hold it only on the sides. Do not touch the tank seats or contact points.

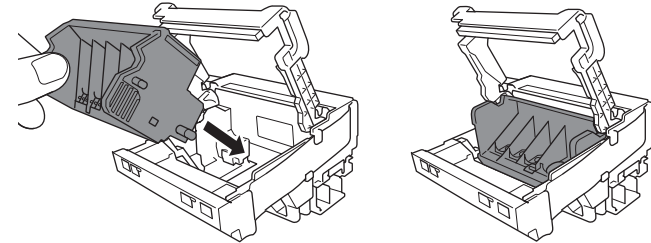


5 Remove the protective orange cap

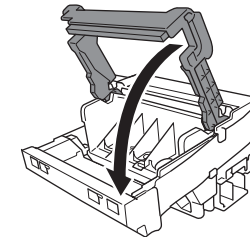


6 Insert the print head into the print head holder

Tilt the print head forward and place it gently into position. Do not try to force it.



7 Lower the print head lever until it locks into place

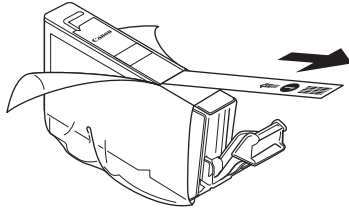


NOTE Once the print head is in place, do not remove it unnecessarily.

Install the Ink Tanks

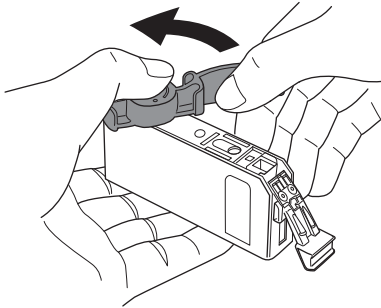
1 Unwrap the first ink tank

Pull the orange tape off to remove the protective wrap.

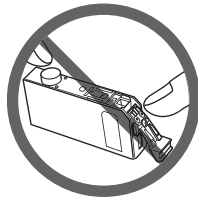
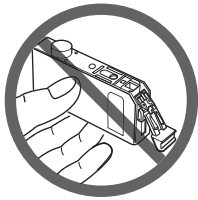


2 Remove protective cap

Hold the ink tank as shown, and twist the cap off.

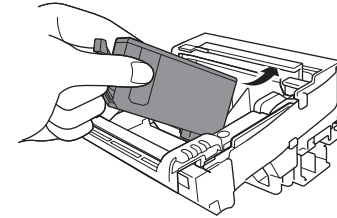


CAUTION Do not grip the tank with force or hold the tank on the sides to avoid squeezing ink from the tank.

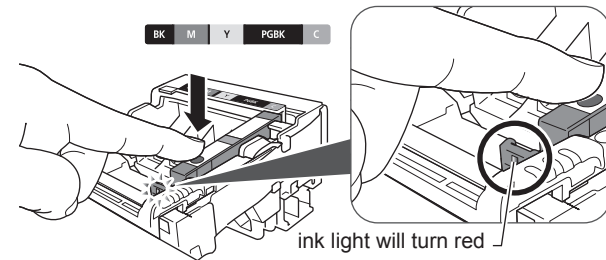


3 Insert the ink tank into the print head

a Slide the ink tank into the matching color slot.

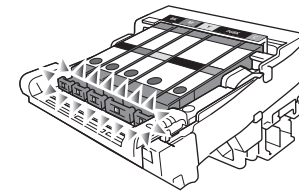


b Press the PUSH mark until it clicks into place.



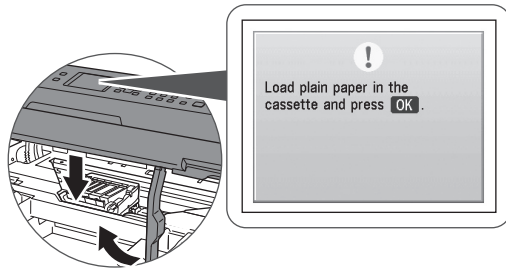
NOTE Take care to match the inks with the labels in the print head.

4 Repeat steps 1–3 until all remaining ink tanks are in place and all ink lights are red.

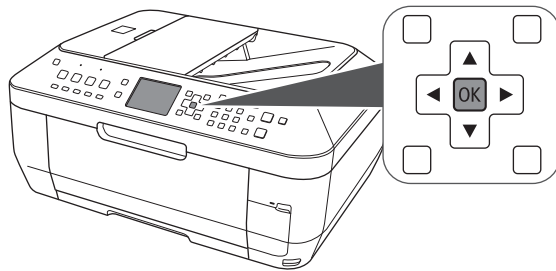


5 Close the cover

- NOTE** The printer will perform initial start up maintenance. Wait until the “Load plain paper” screen displays before continuing setup.

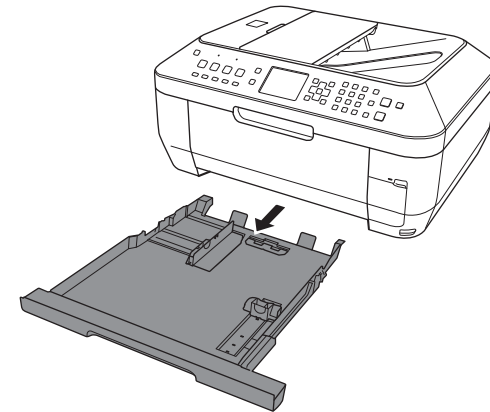


6 Press the OK button



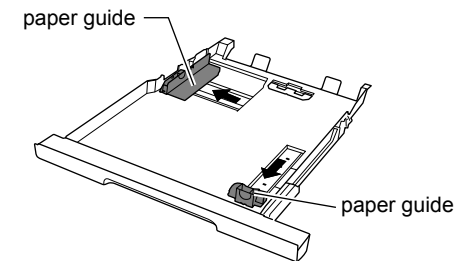
Load Paper

1 Remove the cassette

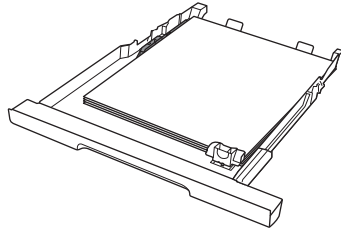


2 Load plain paper with the printing side down

- a Paper should fit between the adjustable paper guides.

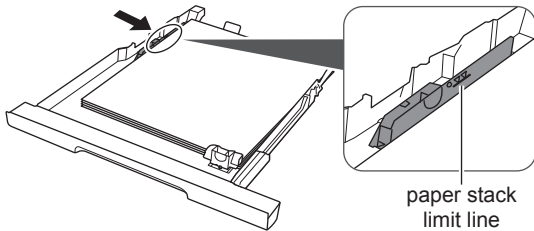


- b Insert at least 3 sheets of plain paper (the minimum needed for the next action).

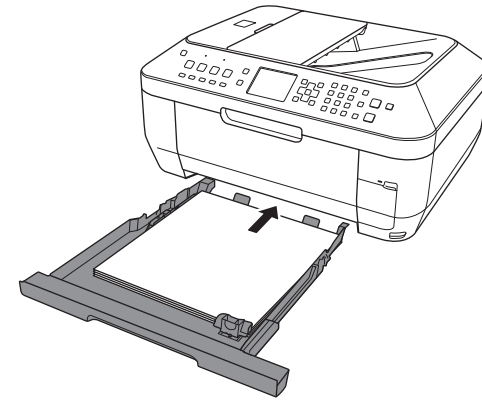


NOTE The cassette is for plain paper only.

- 3 Slide the guides to match the paper size
(A slight space between the paper guide and the paper stack is acceptable.)
- 4 Confirm paper stack does not exceed the limit

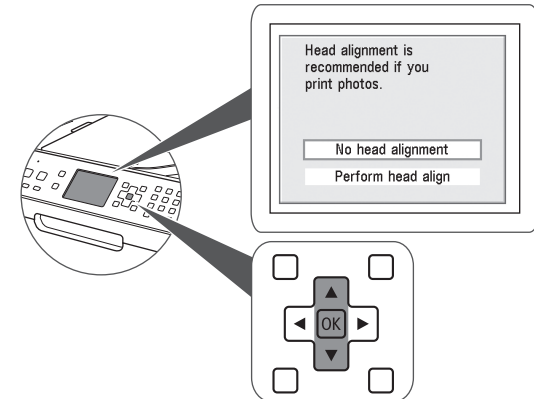


- 5 Slide the cassette back in until it clicks into place

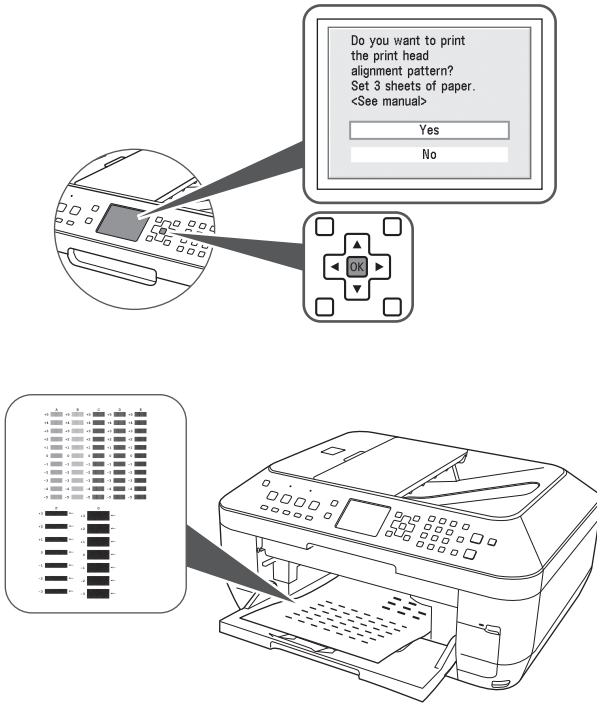


Align the Print Head

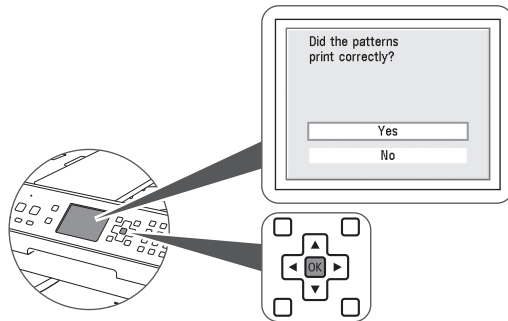
- 1 Start alignment
- a Use the ▲ and ▼ button to select **Perform head align.**



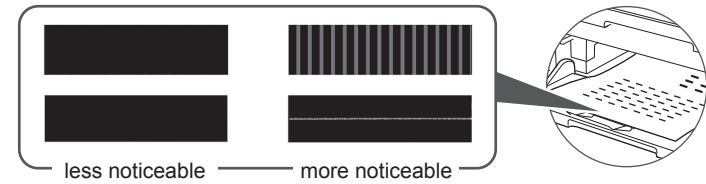
b Select **Yes** to print the first alignment pattern, then press **OK**.



c Select **Yes** again, then **OK**.



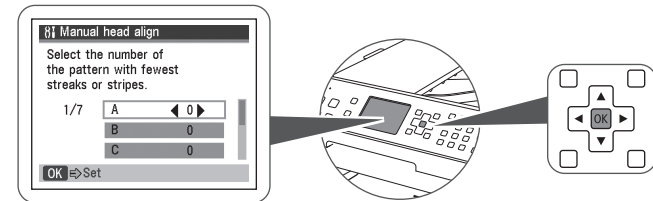
2 Look at the first printout



3 Select best pattern

Use the ◀▶▲▼ buttons to enter the number of the pattern that has the least noticeable vertical or horizontal streaks for columns **A** to **G**, then press the **OK** button.

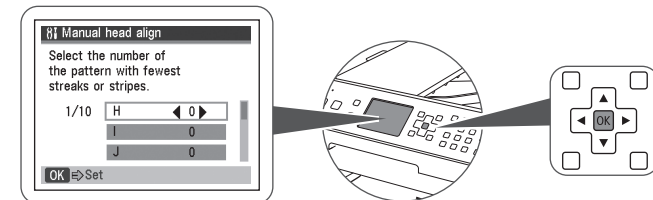
NOTE If you are not sure which is the best pattern, pick the setting that produces the least noticeable white streaks.



4 Press **OK** again to print the second pattern

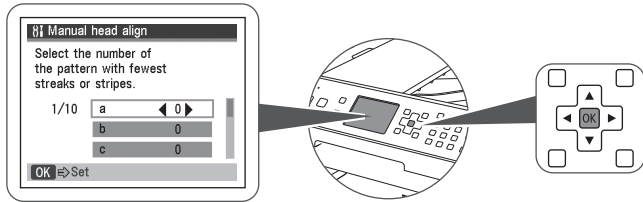
5 Look at the second printout

Repeat step 3 for columns **H** to **Q**.

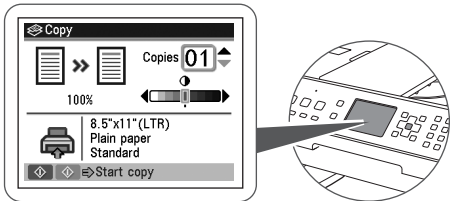


6 Press **OK** again to print the third pattern

- Look at the third printout
Repeat step 3 for columns a to j.



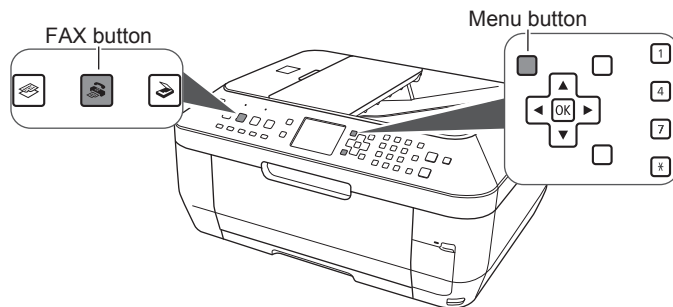
- Press **OK** to complete print head alignment
NOTE The Standby screen will display when print head alignment is complete.



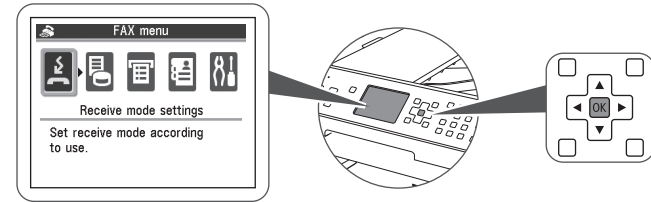
Set Up to Receive Faxes

If you are not using your MX860 as a fax, go to "Set Up the Software" on page 15.

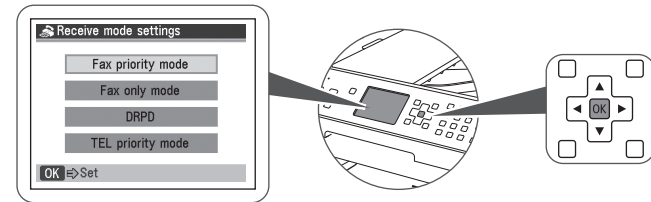
- Press the **FAX** button
- Press the **Menu** button



- Select **Receive mode settings**
Use the **◀** or **▶** button to select Receive mode settings, then press **OK**



- Select the receive mode
Use the **▲** or **▼** button to select a receive mode, then press the **OK** button.



- NOTE** Select a receive mode according to your needs.
- When you receive mainly faxes and sometimes voice calls: Select **FAX priority mode**.
 - When you have a dedicated telephone line for fax use only: Select **FAX only mode**.
 - When you receive mainly voice calls and sometimes faxes: Select **TEL priority mode**.
 - When you subscribe to a ring pattern detection service provided by your telephone company, and you want to receive a fax only if the machine detects the pattern for fax: Select **DRPD** (Distinctive Ring Pattern Detection).

- When the FAX menu returns, press the **Back** button

- NOTE** For details on fax settings and how to change them, refer to the on-screen manual: **Basic Guide**.

Set Up Your Fax Sender Information

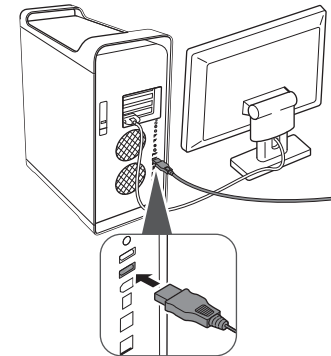
For details on sender information, refer to "Specifying the Basic Settings for the Machine" in the on-screen manual: **Basic Guide**.

➔ **WHAT'S NEXT?** Go to "Set Up the Software" on page 15.

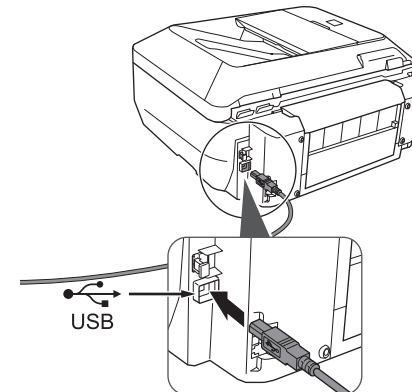
Set Up the Software

Install the Software

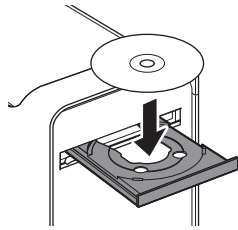
- 1 Connect the USB cable to your computer



- 2 Connect the other end to your MX860

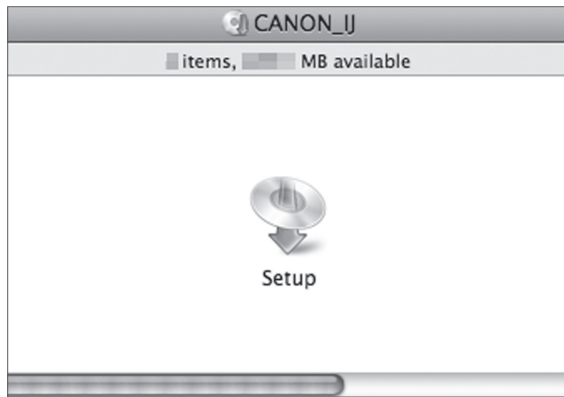


3 Insert the Setup disc




4 Double-click the **Setup** icon on your screen

NOTE If the CD-ROM folder does not open automatically, double-click the **CANON_IJ** icon on the desktop.



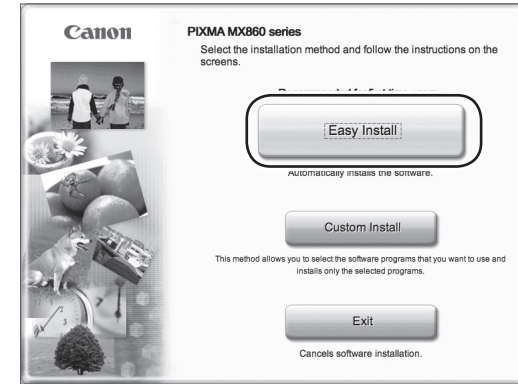
5 Enter your administrator password



NOTE If you do not know your administrator name or password, click , then follow the on-screen instructions.

6 Click **Easy Install**

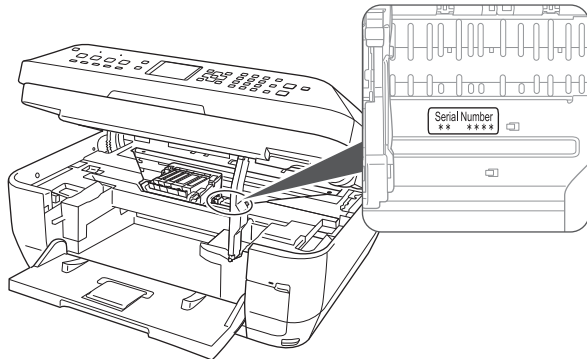
The drivers, application software and on-screen manuals will install automatically.



7 Follow the on-screen instructions



- NOTE If your computer is connected to the internet you will be prompted to register your product. The serial number is required for product registration. The serial number is located on the product packaging and on the inside of the product.



8 Click Restart

After restarting, remove the Setup CD-ROM and keep it in a safe place.



- ➔ WHAT'S NEXT? Decide how you want to connect to your MX860.

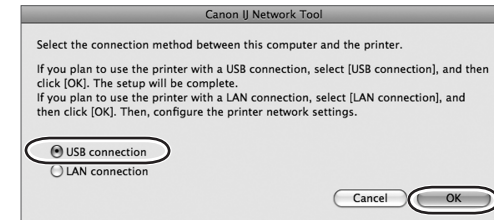
Connecting to a Network

Go to "Connect to Your Network (optional)" on page 18

- CAUTION If you plan to connect to a network but select **USB connection** by mistake you will need to reinstall the software.

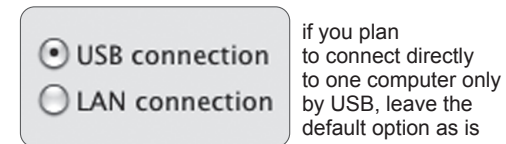
Connecting with a USB Cable

After your computer restarts, the Canon IJ Network Tool dialog appears.



1 Select USB connection

- NOTE Only select USB connection if you plan to connect the MX860 directly to a single computer and not to a network.



2 Click OK

Congratulations! You are finished with the setup.

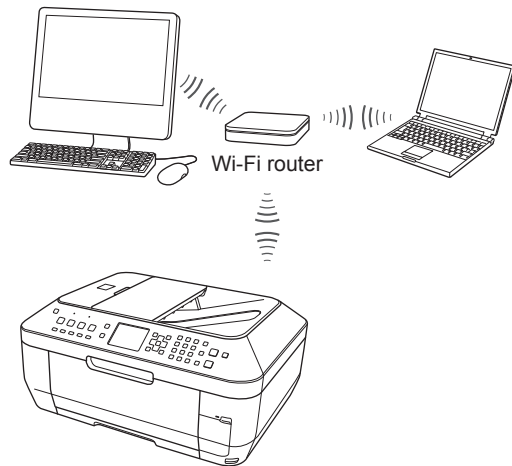
- ➔ WHAT'S NEXT? Go to "Start Using Your MX860!" on page 37.

Connect to Your Network (optional)

Choose Your Network Type



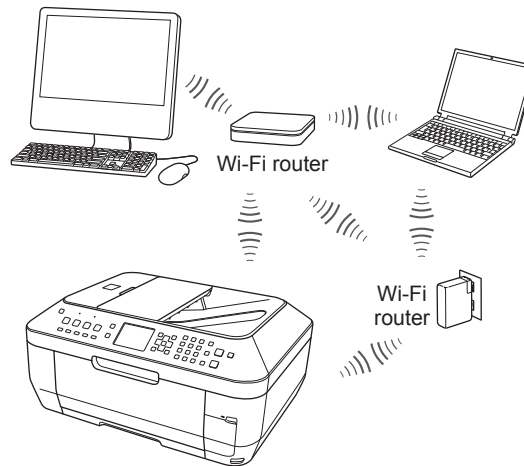
wireless network with
a **single** access point



Go to page 19.



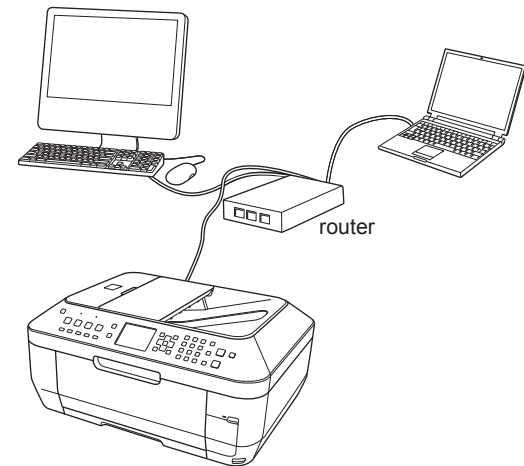
wireless network with
multiple access points
(example: Airport Extreme *and* Airport Express)



Go to page 23.



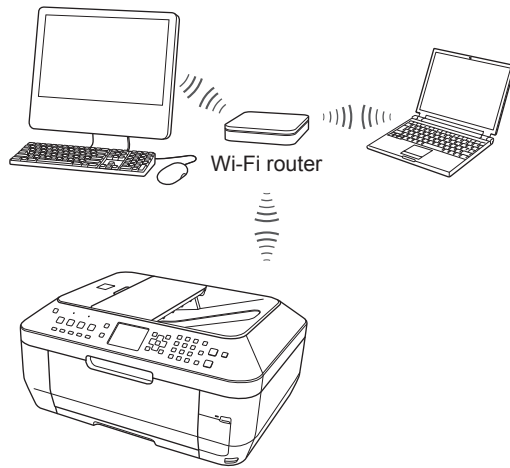
wired network connecting
with an Ethernet cable



Go to page 28.


- NOTE The MX860 can not be used over a wireless network and a wired network at the same time.
- NOTE To connect additional computers to the MX860, go to "Connecting Additional Computers" on page 33.

Wireless Networks with a Single Access Point



NOTE If your network has more than one wireless access point, go to page 23.

- 1 Locate the name and password (if applicable) of your wireless network

Click the  icon in the menu bar and write down the network name with the checkmark next to it.

- 2 Make sure the MX860 is ready

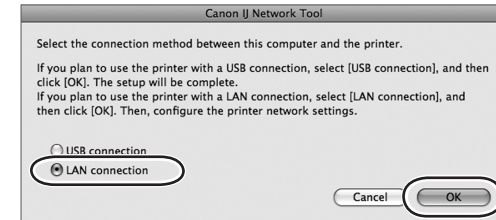
IMPORTANT Ensure the MX860 is connected to your computer with the USB cable and is powered on.

NOTE You will need the USB cable only for the initial network setup. Once your MX860 is connected to your network, the USB cable is no longer needed.

NOTE The MX860 is set at the factory to connect to a wireless (Wi-Fi) network. If your MX860 was previously set for a wired network, set the connection type now for a wireless network. See "Set the Network Connection Type" on page 28 for details.

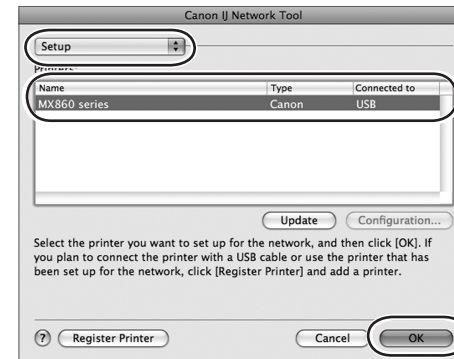
- 3 Select **LAN connection**

On the Canon IJ Network Tool dialog, select **LAN connection**, then click **OK**.




- 4 Select printer to use

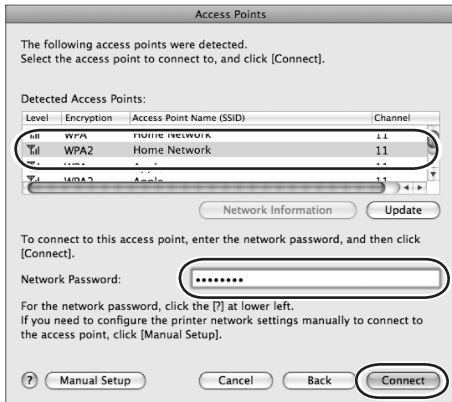
- a Select **Setup** in the pop-up menu.
- b Select **MX860 series** in the Printers pane, then click **OK**.



5 Select your wireless network

- a Select the network name you wrote down in step 1.
- b If your network requires a password, enter it.
- c Click **Connect**.

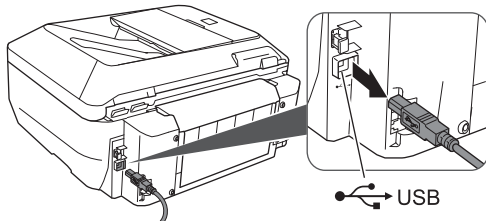
 **NOTE** The network password is case sensitive.



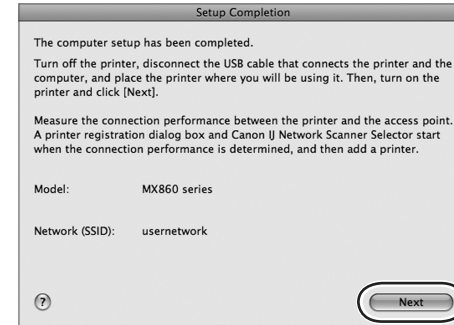
6 Complete the network setup


When the Setup Completion dialog appears:

- a Disconnect the USB cable and place the MX860 where it will be used.



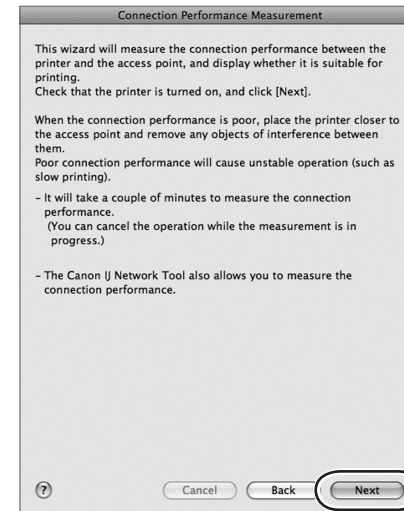
- b On your computer, click **Next**.



 **NOTE** If the MX860 does not connect, see section 5.6 of the printed manual "Network Setup Troubleshooting."

Measuring Wireless Connection Performance

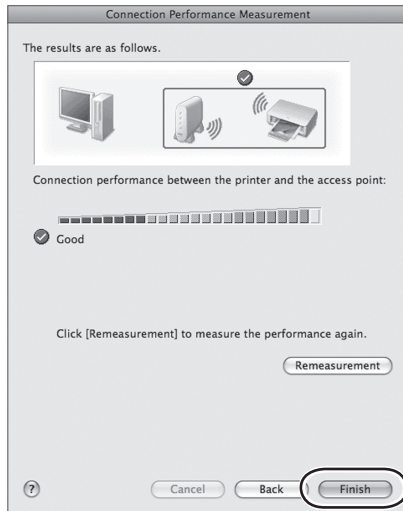
- 1 Click **Next**.



The connection measurement results will display.

2 Review results

- a If you see a green check mark ✓ and the word **Good**, click **Finish**.
- b If the connection results are less than "Good," move the MX860 to a new location, then click **Remeasurement** to repeat the connection performance test.

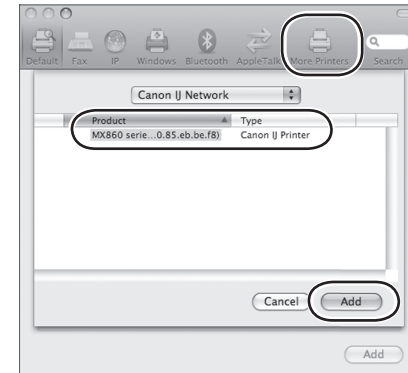


Add the Printer (OS X v10.5.x)

The Printer Browser window will open automatically.

- 1 Select the printer
 - a Click **More Printers**.
 - b Select **MX860 series**.

- c Click **Add**.

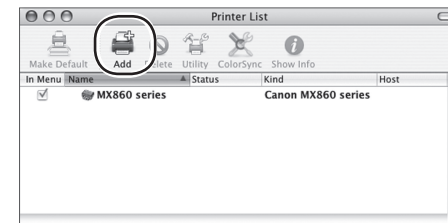


- NOTE The letters and numbers after "MX860 series" show the MAC address for this device (Media Access Control address, a unique identifier for any equipment connected to a network).

Add the Printer (OS X v10.4.x)

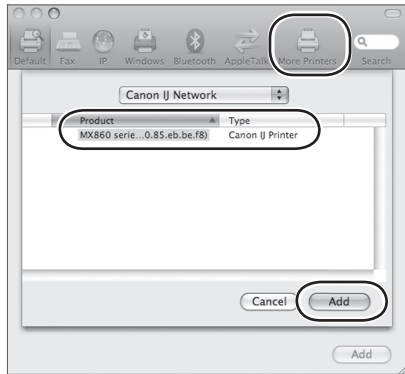
The Printer List window will open automatically.

- 1 Click **Add**

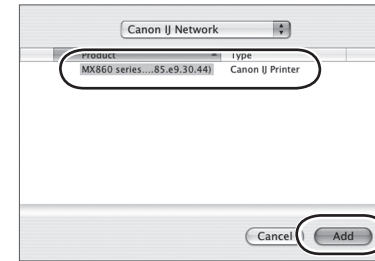


- 2 Add the printer
 - a Click **More Printers**.
 - b Select **MX860 series**.

c Click **Add**.



b Click **Add**.



Select the Scanner

The Canon IJ Network Scanner Selector dialog opens.

Add the Printer (OS X v10.3.9)

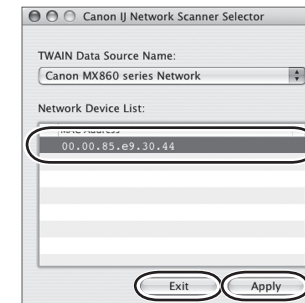
The Printer List window will open automatically.

1 Click **Add**



The Printer Browser window opens.

a Select **MX860 series**.



1 Select scanner

a From the pop-up menu, select **Canon MX860 series Network**.

b In the Network Device List pane, select the MAC address of the MX860.

NOTE There should be only one device listed unless you have more than one MX860 series device connected to your network.

c Click **Apply** to use the MX860 as a scanner.

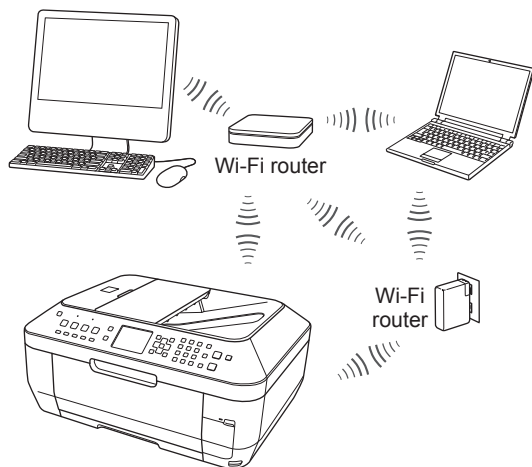
d Confirm that a checkmark appears next to the selected device, then click **Exit**.

Congratulations! You are finished with the setup.

➔ **WHAT'S NEXT?** Go to "Start Using Your MX860!" on page 37.


Wireless Networks with Multiple Airport Access Points

For example, Airport Extreme **and** Airport Express or Time Capsule



NOTE If your network has only a single access point, go to page 19.

- 1 Locate the name and password (if applicable) of your wireless network

Click the  icon in the menu bar and write down the network name with the checkmark next to it.

- 2 Make sure the MX860 is ready

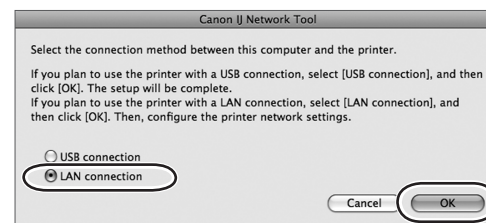
IMPORTANT Ensure the MX860 is connected to your computer with the USB cable and is powered on

NOTE You will need the USB cable only for the initial network setup. Once your MX860 is connected to your network, the USB cable is no longer needed.

NOTE The MX860 is set at the factory to connect to a wireless (Wi-Fi) network. If your MX860 has been previously set for a wired network, ensure the connection type is set for a wireless network. Go to "Set the Network Connection Type" on page 28 for details.

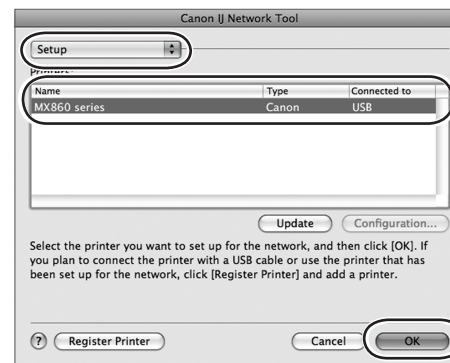
- 3 Select **LAN connection**

On the Canon IJ Network Tool dialog, select **LAN connection**, then click **OK**.

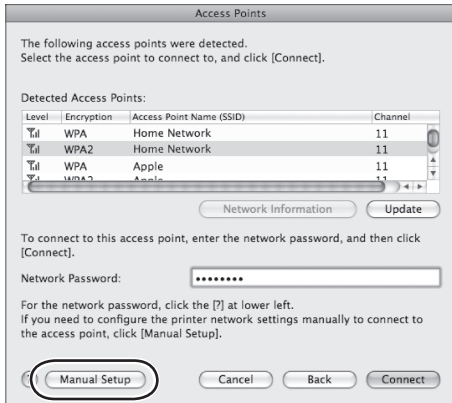


- 4 Select printer to use

- a Select **Setup** in the pop-up menu.
- b Select **MX860 series** in the Printers pane.
- c Click **OK**.

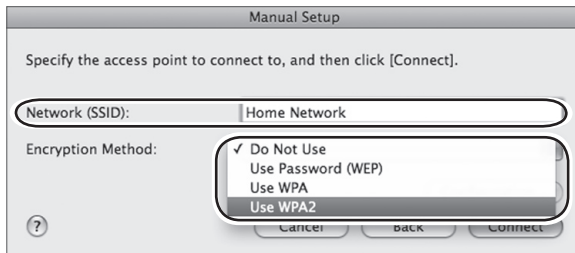


5 Click Manual Setup



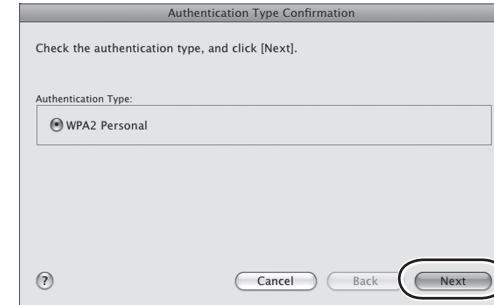
6 Enter network name

- Enter the name of the network (SSID) you would like the MX860 to join.
- Choose an encryption method that matches what is in use for your network.



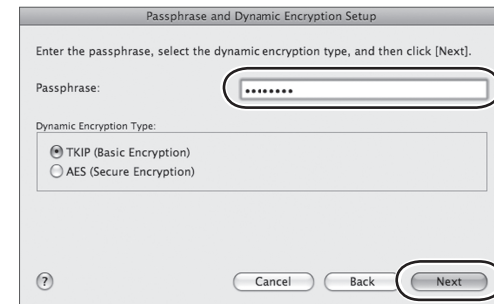
- NOTE If you do not have encryption enabled on your network, select **Do Not Use** on the encryption method pop-up menu, then click **Connect**. The procedure will skip directly to "Complete the network setup" on page 25.

7 Click Next



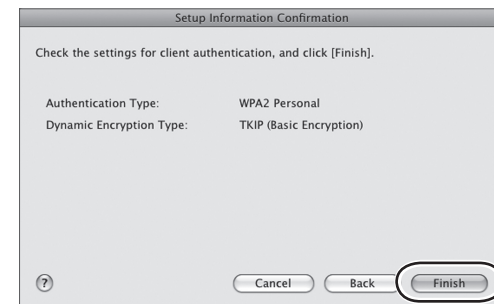
8 Enter your network passphrase, then click Next

- NOTE The passphrase (password) is case sensitive.

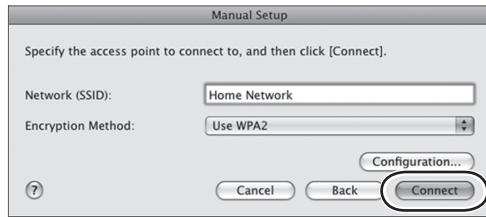


9 If settings are correct, click Finish

- Click **Back** to change any settings.



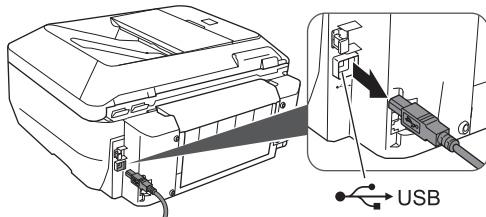
10 Click **Connect**



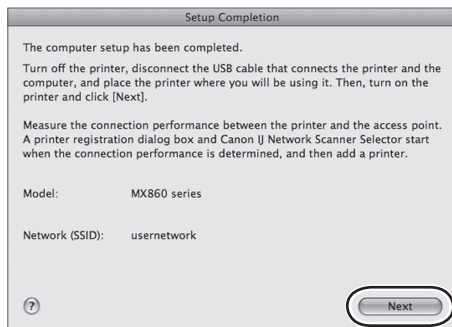
11 Complete the network setup

When the Setup Completion dialog appears:

- Disconnect the USB cable and place the MX860 where it will be used.



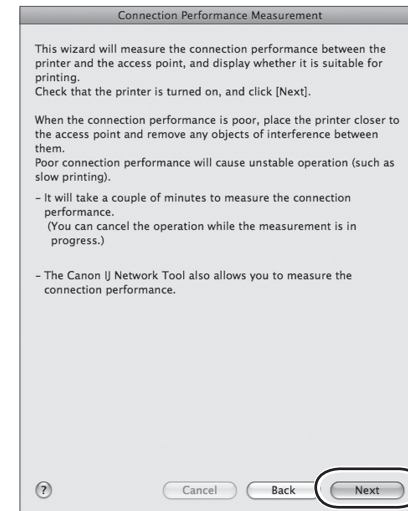
- On your computer, click **Next**.



NOTE If the MX860 does not connect, see section 5.6 of the printed manual "Network Setup Troubleshooting."

Measuring Wireless Connection Performance

1 Click **Next**

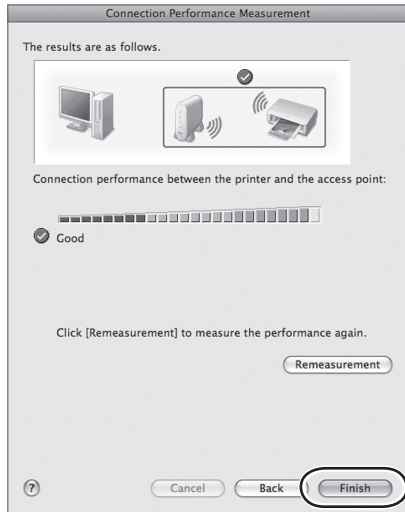


The connection measurement results display.

2 Review results

- If you see a green check mark  and the word **Good**, click **Finish**.

- b If the connection results are less than “Good,” move the MX860 to a new location, then click **Remeasurement** to repeat the connection performance test.

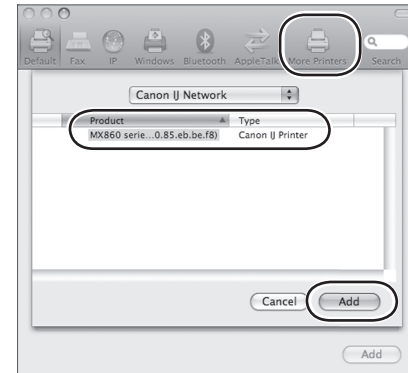


Add the Printer (OS X v10.5.x)

The Printer Browser window will open automatically.

- 1 Select the printer
 - a Click **More Printers**.
 - b Select **MX860 series**.

- c Click **Add**.



- NOTE The letters and numbers after "MX860 series" show the MAC address for this device (Media Access Control address, a unique identifier for any equipment connected to a network).

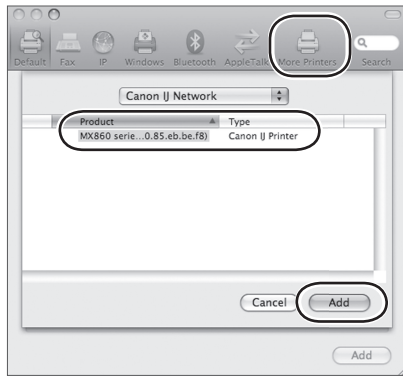
Add the Printer (OS X v10.4.x)

The Printer List window will open automatically.

- 1 Click **Add**

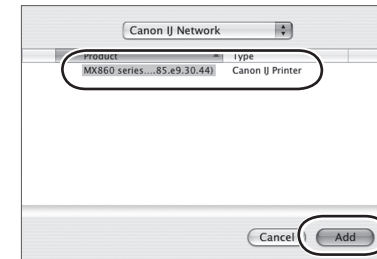


- 2 Add the printer
 - a Click **More Printers**.
 - b Select **MX860 series**.
 - c Click **Add**.



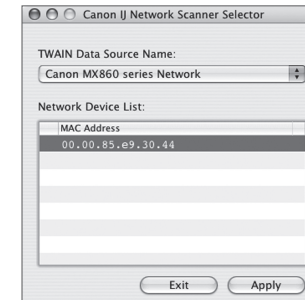
The Printer Browser window opens.

- a Select **MX860 series**.
- b Click **Add**.



Select the Scanner

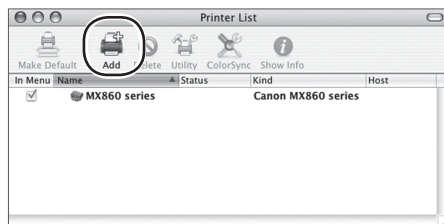
The Canon IJ Network Scanner Selector dialog opens.



Add the Printer (OS X v10.3.9)

The Printer List window will open automatically.

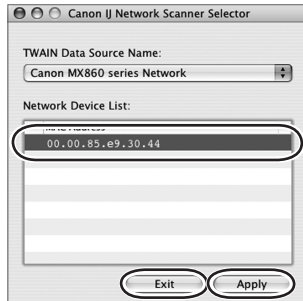
- 1 Click **Add**



- 1 Select scanner

- a From the pop-up menu, select **Canon MX860 series Network**.
 - b In the Network Device List pane, select the MAC address of the MX860.
- NOTE There should be only one device listed unless you have more than one MX860 series device connected to your network.
- c Click **Apply** to use the MX860 as a scanner.

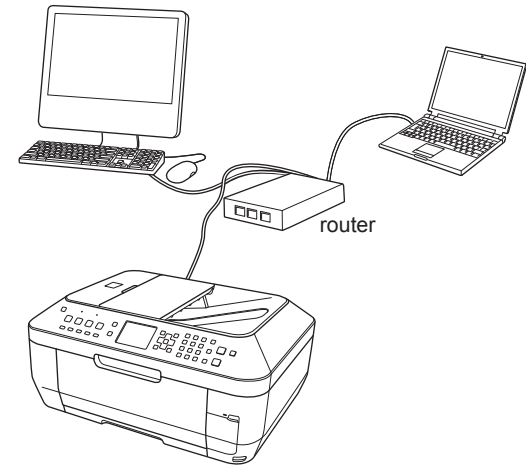
- d Confirm that a checkmark appears next to the selected device, then click **Exit**.



Congratulations! You are finished with the setup.

➔ **WHAT'S NEXT?** Go to "Start Using Your MX860!" on page 37.

Wired Networks



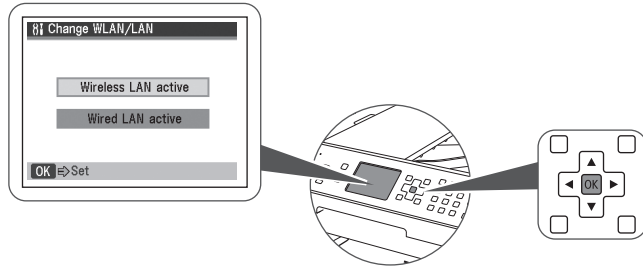
If you will be connecting your MX860 to a wired LAN (Local Area Network) using an Ethernet cable, follow the steps below.

- 1 Make sure the MX860 is ready
 - ❗ **IMPORTANT** Ensure the MX860 is connected to your computer with the USB cable and is powered on
 - 📄 **NOTE** You will need the USB cable only for the initial network setup. Once your MX860 is connected to your network, the USB cable is no longer needed.
- 2 Set the Network Connection Type

The MX860 is set at the factory to connect to a wireless (Wi-Fi) network. To connect to a wired network using an Ethernet cable, change the network connection type from the MX860 panel.

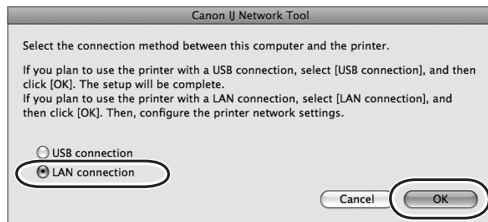
 - a On the MX860, press the **Menu** button.
 - b Use the ◀ or ▶ button to select **Settings**, then press the **OK** button.
 - c Select **Device Settings**, then press the **OK** button.

- d Use the ▲ or ▼ button to select **LAN settings**, then press the **OK** button.
- e Select **Change WLAN/LAN**, then press the **OK** button.
- f Select the desired network connection method (**Wired LAN active**), then press the **OK** button.

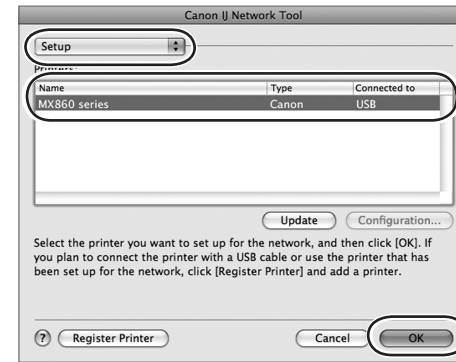


3 Select LAN connection

On the Canon IJ Network Tool dialog, select **LAN connection**, then click **OK**.



- 4 Select printer to use
 - a Select **Setup** in the pop-up menu.
 - b Select **MX860 series** in the Printers pane.
 - c Click **OK**.



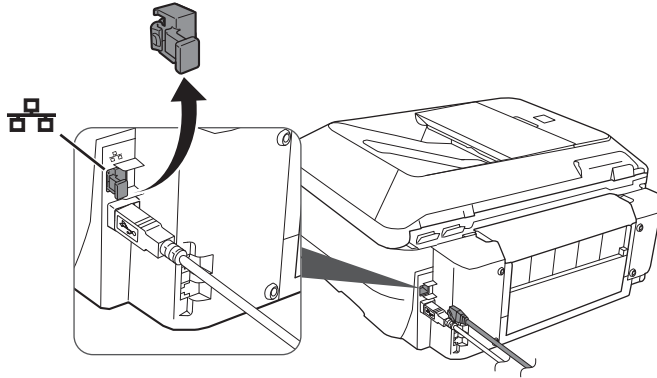
A **Check Wired LAN Connection** reminder appears.






- NOTE Do not click **Yes** until after the Ethernet cable is connected in step 5.

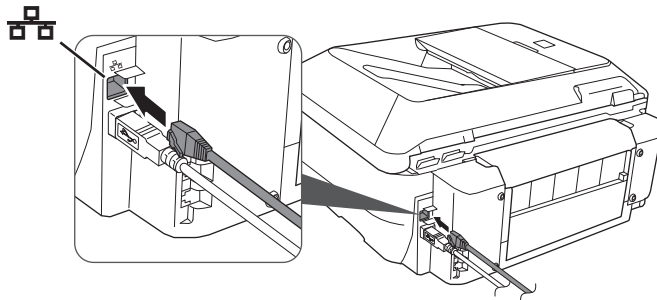
5 Connect the Ethernet cable

- a Remove the LAN connector cap from the back of the MX860 (located just above the USB connection).

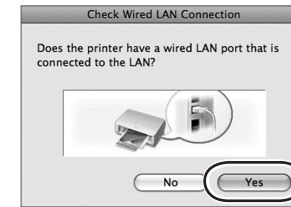


- b Connect the MX860 to your network with an Ethernet cable (not included).

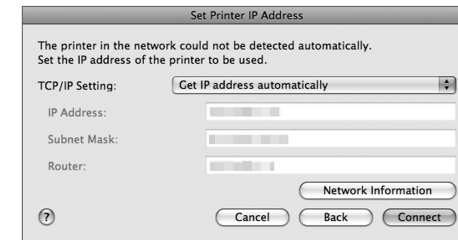
- ⚠ CAUTION** Do not attempt to connect the supplied phone cord to the LAN port. Do not confuse the LAN port  with the telephone jacks  .



6 Click **Yes** to close the Check Wired LAN Connection reminder

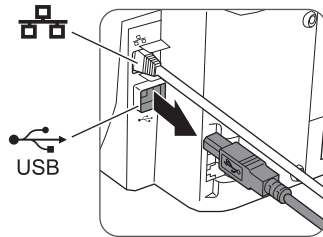


- NOTE** If the MX860 is not detected automatically, the Set Printer IP Address dialog appears.



The TCP/IP Setting of **Get IP address automatically** is correct for most networks. If your network uses pre-assigned IP addresses (also called fixed or static addresses), select **Use following IP address** in the pop-up menu and enter the appropriate information, then click **Connect**.

7 Disconnect the USB cable, then click **OK**.

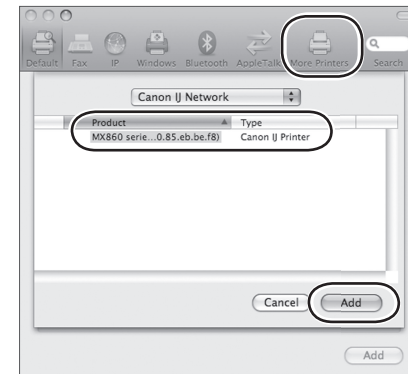


Add the Printer (OS X v10.5.x)

The Printer Browser window will open automatically.

1 Select the printer

- a Click **More Printers**.
- b Select **MX860 series**.
- c Click **Add**.

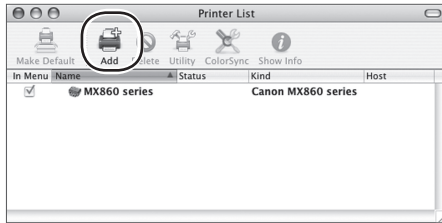


NOTE The letters and numbers after "MX860 series" show the MAC address for this device (Media Access Control address, a unique identifier for any equipment connected to a network).

Add the Printer (OS X v10.4.x)

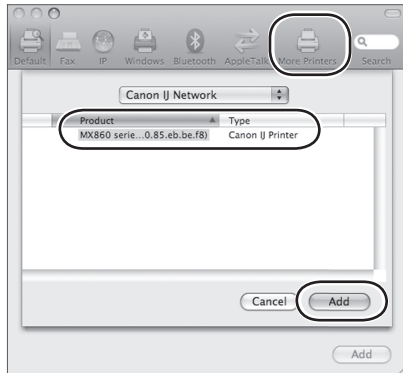
The Printer List window will open automatically.

- 1 Click **Add**



- 2 Add the printer

- a Click **More Printers**.
- b Select **MX860 series**.
- c Click **Add**.



Add the Printer (OS X v10.3.9)

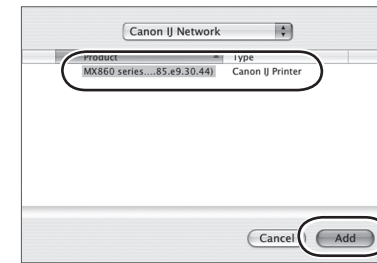
The Printer List window will open automatically.

- 1 Click **Add**



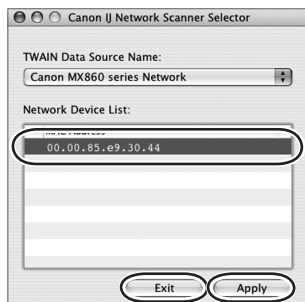
The Printer Browser window opens.


- a Select **MX860 series**.
- b Click **Add**.



Select the Scanner

The Canon IJ Network Scanner Selector dialog opens.




- 1 Select scanner
 - a From the pop-up menu, select **Canon MX860 series Network**.
 - b In the Network Device List pane, select the MAC address of the MX860.
 -  **NOTE** There should be only one device listed unless you have more than one MX860 series device connected to your network.
 - c Click **Apply** to use the MX860 as a scanner.
 - d Confirm that a checkmark appears next to the selected device, then click **Exit**.

Congratulations! You are finished with the setup.

➔ **WHAT'S NEXT?** Go to "Start Using Your MX860!" on page 37.

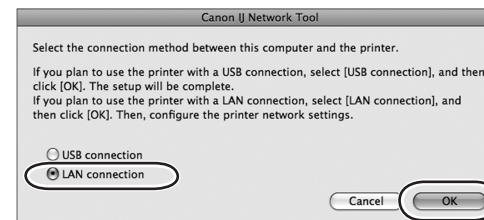
Connecting Additional Computers

More than one networked computer can print to your MX860. Follow the instructions in this section if one computer has already been setup to use your MX860 on a network. (See "Connect to Your Network (optional)" on page 18.)

 **NOTE** A USB cable is not required for connecting additional networked computers to your MX860.

- 1 Make sure the MX860 is on and connected to your wireless or wired network
- 2 Install the software on the additional computer
 - a Follow the software installation steps in "Set Up the Software" on page 15.
 - b After installing the software and restarting your computer, the Canon IJ Network Tool automatically starts.
- 3 Select **LAN connection**

On the Canon IJ Network Tool dialog, select **LAN connection**, then click **OK**.

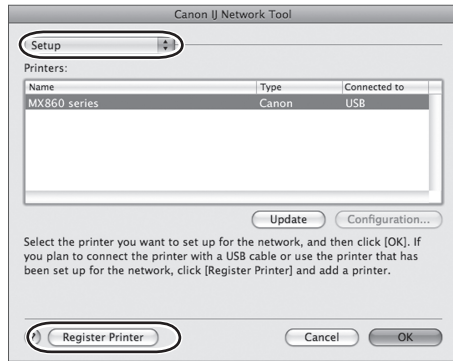


- 4 If the Setup Preparations screen appears, confirm that preparation is complete, then click **OK**.



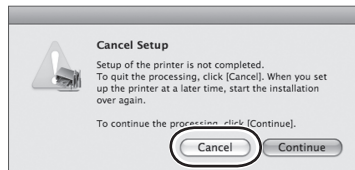
- 5 Register printer

- a Select **Setup** in the pop-up menu.
- b Click **Register Printer**.



- 6 Click **Cancel**

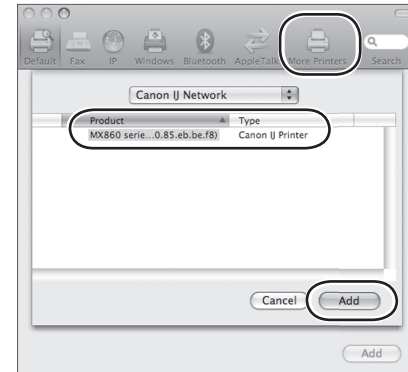
When the **Cancel Setup** screen appears, click **Cancel**, or if the **You have no printers available** screen appears, click **Cancel**.



Add the Printer (OS X v10.5.x)

The Printer Browser window will open automatically.

- 1 Select the printer
 - a Click **More Printers**.
 - b Select **MX860 series**.
 - c Click **Add**.

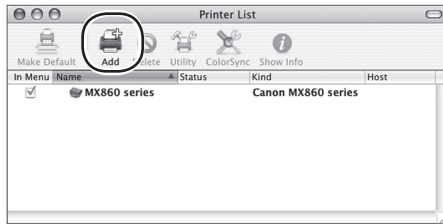


- NOTE The letters and numbers after "MX860 series" show the MAC address for this device (Media Access Control address, a unique identifier for any equipment connected to a network).

Add the Printer (OS X v10.4.x)

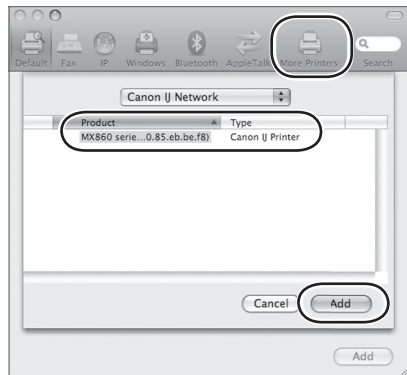
The Printer List window will open automatically.

1 Click **Add**



2 Add the printer

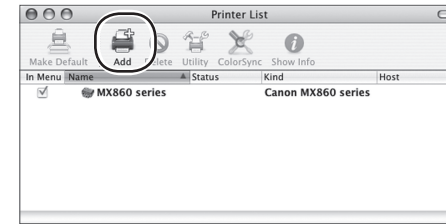
- a Click **More Printers**.
- b Select **MX860 series**.
- c Click **Add**.



Add the Printer (OS X v10.3.9)

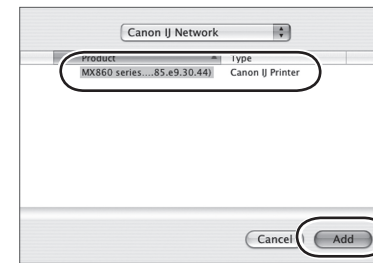
The Printer List window will open automatically.

1 Click **Add**



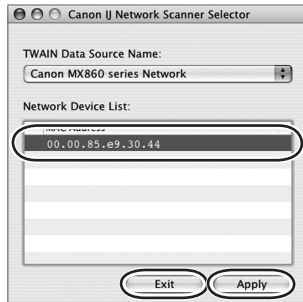
2 The Printer Browser window opens.

- a Select **MX860 series**.
- b Click **Add**.



Select the Scanner

The Canon IJ Network Scanner Selector dialog opens.



1 Select scanner

- a From the pop-up menu, select **Canon MX860 series Network**.
- b In the Network Device List pane, select the MAC address of the MX860.
- 📄 **NOTE** There should be only one device listed unless you have more than one MX860 series device connected to your network.
- c Click **Apply** to use the MX860 as a scanner.
- d Confirm that a checkmark appears next to the selected device, then click **Exit**.

Congratulations! You are finished with the setup.

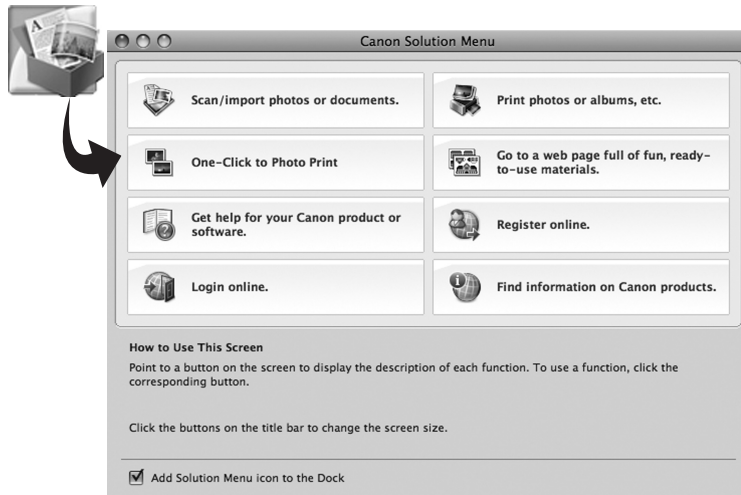
➔ **WHAT'S NEXT?** Go to "Start Using Your MX860!" on page 37.

Start Using Your MX860!

Solution Menu

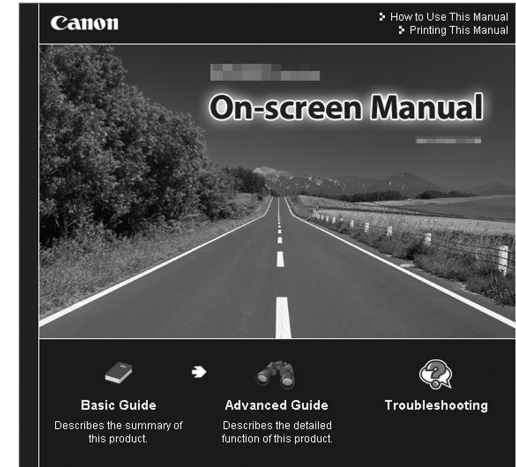
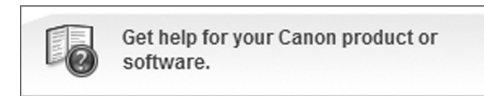
The Solution Menu provides quick access to useful functions and information about your MX860. From here you can open various applications and on-screen manuals with a single click.

To start the Solution Menu, click the **Canon Solution Menu** icon on the Dock.



On-Screen Manual

To open the on-screen manual, click the **Get help for your Canon product or software** button in the Solution Menu.



The on-screen manual has three parts:

- **Basic Guide**
Describes basic operations, including fax setup, and gives an introduction to other functions
- **Advanced Guide**
Describes advanced operating procedures to make full use of your MX860
- **Troubleshooting**
Describes troubleshooting steps for your MX860

Getting Help from Canon

- For email Tech Support, please go to **www.canontechsupport.com**
- For live Tech Support, please call toll-free **800-828-4040** (this option provides live technical support, free of service charges, Monday–Friday, excluding holidays, during the warranty period)
- Telephone Device for the Deaf (TDD) support is available at **866-251-3752**

Ordering Information

The following ink tanks are compatible with this product:

	Order #
PGI-220 Black	2945B001
CLI-221 Black	2946B001
CLI-221 Cyan	2947B001
CLI-221 Magenta	2948B001
CLI-221 Yellow	2949B001

Call **800-OK-CANON** to locate a dealer near you, or visit the Canon eStore at **www.canonestore.com**.

Canon and PIXMA are registered trademarks of Canon Inc. in the United States and may be registered trademarks or trademarks in other countries. IMAGEANYWARE is a trademark of Canon.

Apple, AirPort Express, AirPort Extreme, Mac, Macintosh and Time Capsule are trademarks of Apple, Inc., registered in the U.S. and other countries. All other product and brand names are trademarks of their respective owners.

As an ENERGY STAR® partner, Canon U.S.A., Inc. has determined that this product meets the ENERGY STAR® guidelines for energy efficiency.

CANON U.S.A. INC.
One Canon Plaza, Lake Success, NY 11042
www.usa.canon.com
©2009 Canon U.S.A., Inc.

PRINTED IN U.S.A.